

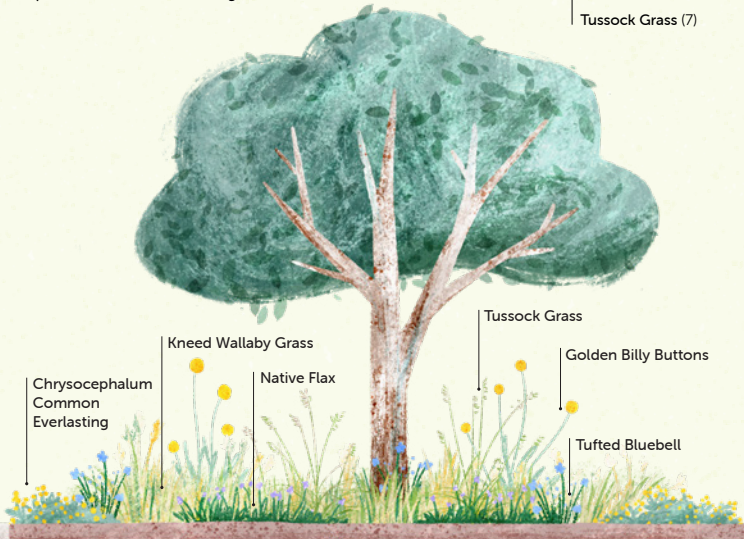
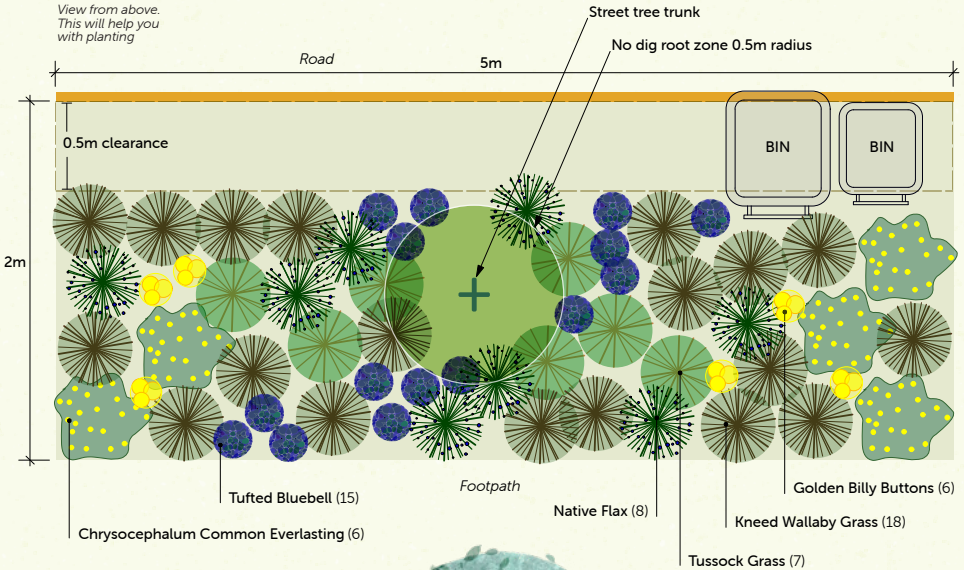
# GRASS AND WILDFLOWER MEADOW FACT SHEET

Create a beautiful flowering grassland and wildflower native nature strip

View from above. This will help you with planting

The two dominant species in this design are the Knead Wallaby Grass and Grey Tussock Grass. The Knead Wallaby Grass is your low growing grass and the Grey Tussock Grass is the accent plant, providing height and interest through the centre of your nature strip.

Plant the wildflowers in blocks towards the edges of the grassland for maximum impact, so they create bold drifts of colour.

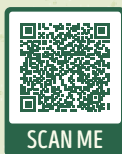


View from the street

Driveway crossover

# RECOMMENDED PLANTS

Based on average nature strip being five metres long by two metres wide, it is recommended to plant the following:



**Nature strip maintenance requirements:**  
As per Hobsons Bay City Council guidelines, residents are required to maintain the nature strip adjacent to their property. This involves keeping it free of trip hazards, protruding objects and ensuring pathways, gutters and driveways are free of weeds, rubbish, and mulch. **Scan to view the Nature Strip Landscape Guidelines**

## TUFTED BLUEBELL

15

*Wahlenbergia communis*

**Height:** 20cm

**Width:** 20cm

**Sun:** Full sun

**Soil type:** Dry, well-drained soil, summer moisture encourages denser growth and prolific flowering

**Flowers and seed:** Spreading perennial herb with thick taproots, self-seeds readily. Single bell shaped white, pale to bright blue flowers peaking Oct – May

**Ecological role:** Nectar plant for butterflies, flowers attract native bees

**Maintenance:** Rejuvenate by pruning severely in winter

## COMMON EVERLASTING

6

*Chrysocephalum apiculatum*

**Height:** 20cm

**Width:** 50cm

**Sun:** Full sun, semi shade

**Soil type:** Most soil types, prefers well drained soil

**Flowers and seed:** Bright gold flowers all year

**Ecological role:** Nectar plant for butterflies

**Maintenance:** Prune late winter or early spring if required

## KNEED WALLABY GRASS

18

*Rytidosperma geniculatum*

**Height:** 30cm

**Width:** 40cm

**Sun:** Full sun, semi shade

**Soil type:** well drained sand and clay loam soils

**Flowers and seed:** Decorative small tussock with fine, green leaves. Buff coloured flowerheads in spring and summer

**Ecological role:** Bird attracting plant, food plant for caterpillars and preferred habitat for many butterflies and moths

**Maintenance:** Thrives on neglect, cut back late winter or early spring – never summer

## TUSSOCK-GRASS

7

*Poa species*

**Height:** 40-50cm

**Width:** 50cm

**Sun:** Full sun, semi shade

**Soil type:** Prefers well drained soil, very adaptable

**Flowers and seed:** Lovely green or blue grass leaves. Grass flowerheads in spring and summer

**Ecological role:** Bird and butterfly attracting plant and food plant for caterpillars

**Maintenance:** Hard prune near the base combined with a rake to remove dead leaves

**Indigenous poa include:**

*Poa labillardieri*, *Poa poiformis* and *Poa sieberiana*

## NATIVE FLAX

8

*Linum marginale*

**Height:** 50cm

**Width:** 30cm

**Sun:** Full sun, semi shade

**Soil type:** Prefers moist, well drained soils

**Flowers and seed:** Lovely blue flowers most of the year, peaking Sep – March

**Ecological role:** Bird attracting berries

**Maintenance:** Cut back hard each year in late autumn to encourage vigorous new growth

## GOLDEN BILLY BUTTONS

6

*Pycnosorus chrysanthes*

**Height:** 50cm

**Width:** 50cm

**Sun:** Full sun, semi shade

**Soil type:** Prefers heavy moist soils, tolerates waterlogging.

Once established will tolerate dry periods

**Flowers and seed:** Bright yellow globular flowerheads held above the foliage June – Dec. Wonderful cut flower, will maintain their colour when dried


**Ecological role:** Nectar plant for butterflies

**Maintenance:** Prune old stems after flowering in January



Contact email

habitatgardens@hobsonsbay.vic.gov.au

 Recommended number of plants to buy