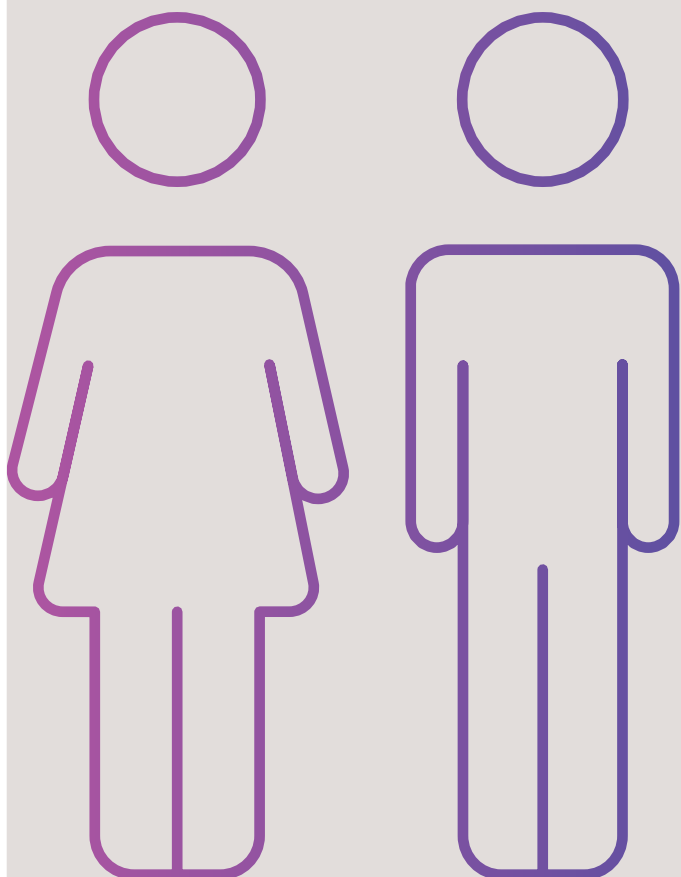


GENDER EQUITY

RESEARCH SUMMARY



Our health and wellbeing is shaped by the people in our lives, our community, and the place in which we live.

Hobsons Bay City Council has prepared a series of research summaries to provide information about the social and environmental conditions that affect our health and wellbeing.

This research summary provides information on people of the LGBTIQ+ community and factors relating to gender diversity in Hobsons Bay.

**HOBSONS
BAY CITY
COUNCIL**

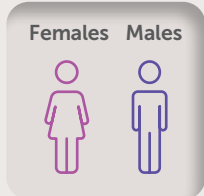
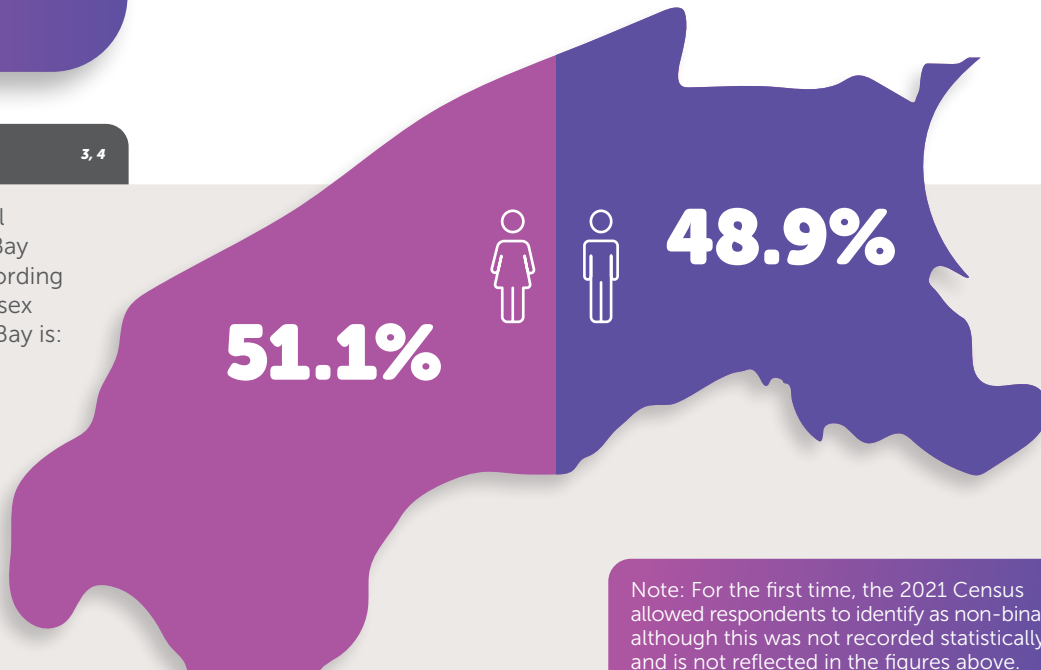


PEOPLE

Population

3, 4

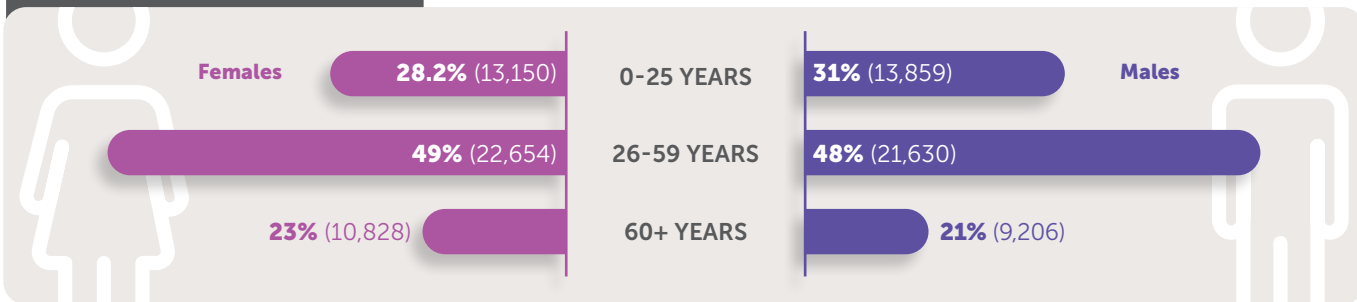
The estimated residential population of Hobsons Bay in 2021 was 92,275. According to the 2021 Census, the sex breakdown of Hobsons Bay is:



Note: For the first time, the 2021 Census allowed respondents to identify as non-binary, although this was not recorded statistically and is not reflected in the figures above.

Sex by age breakdown

3



Young People

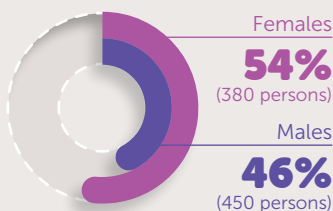
3

People aged 15-25 years not engaged in education, employment or training:

Hobsons Bay: **8.3%**
(832 persons)

Greater Melbourne: **7.4%**

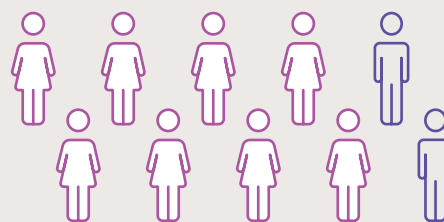
People aged 15-25 years not engaged in education, employment or training in Hobsons Bay:



Older People

3

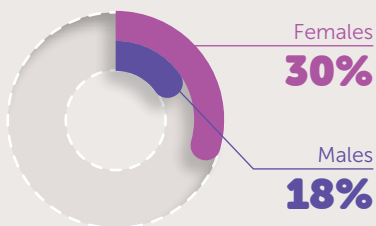
In Hobsons Bay, **eight out of ten** people employed as aged and disabled carers are female (79%).



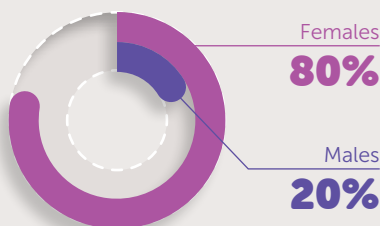
Households

3

Women aged 60 years and above are more likely to live alone in Hobsons Bay:



10% of all households in Hobsons Bay are single parent households. These are more likely to be headed by females:



In 2021, there were 786 people living together in same-sex relationships in Hobsons Bay, a 36% increase since 2016.

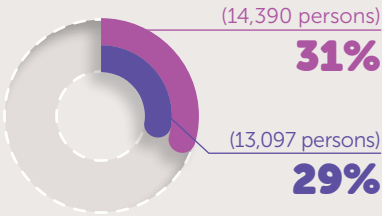


Of these households, slightly more were females living together:

- Females: 51.4% (404 households)
- Males: 48.6% (382 households)

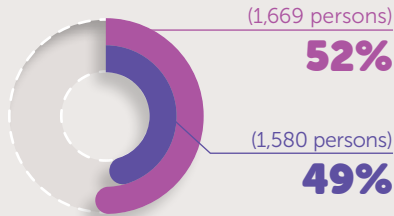
Cultural Diversity ³

Slightly more females than males in Hobsons Bay were born overseas:



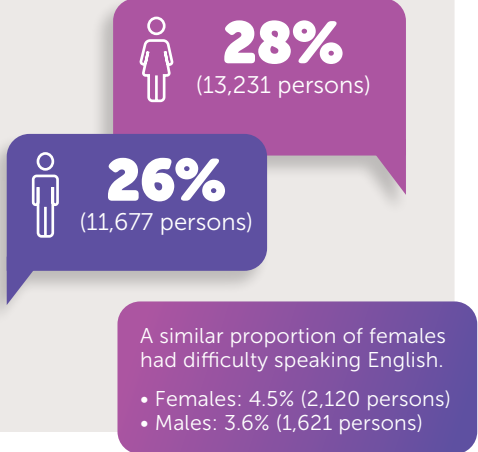
Females Males

Slightly more females arrived in Hobsons Bay from overseas in the last five years:



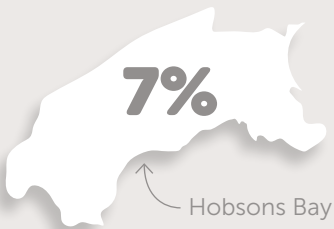
Females Males

Slightly more females speak a language other than English at home in Hobsons Bay:



LGBTIQA+ overall population ^{6, 27}

In 2017, the estimated proportion of people aged 18 years and over and LGBTIQA+ was:



Note: LGBTIQA+ refers to Lesbian, Gay, Bisexual, Transgender, Intersex, Queer, Asexual and other sexually or gender diverse communities (see AIFS, 2022 for glossary of common terms).

First Nations ³

Number of First Nations residents in Hobsons Bay:

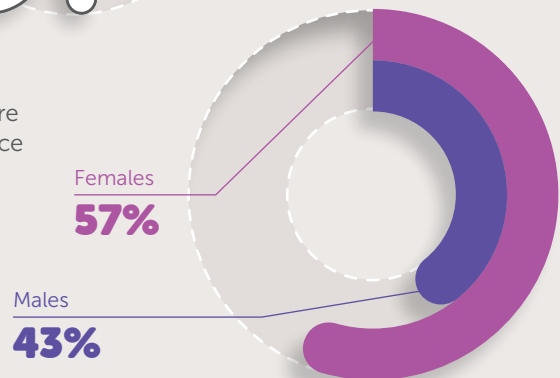


Disability ^{3, 5}

In 2018, similar numbers of men and women were living with a disability in Hobsons Bay:



In 2021, significantly more females needed assistance with activities of daily living in Hobsons Bay:

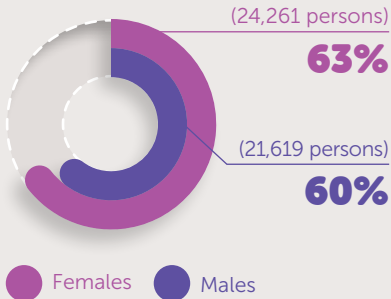


EDUCATION & EMPLOYMENT

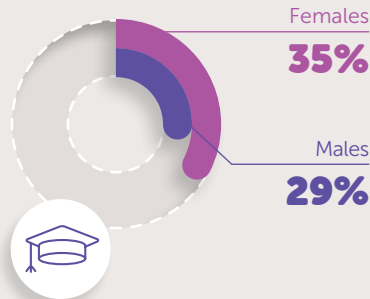
Education

3

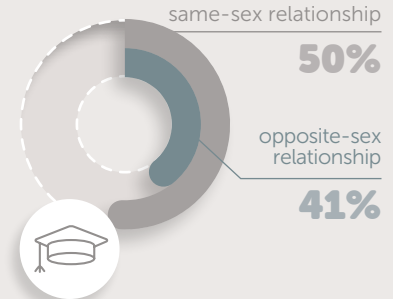
In Hobsons Bay, female residents aged 15+ were slightly more likely to have completed Year 12 or equivalent:



In Hobsons Bay, women were more likely to have a bachelor or higher degree:



In Hobsons Bay, a larger proportion of people living in a same-sex relationship have a bachelor or higher degree:

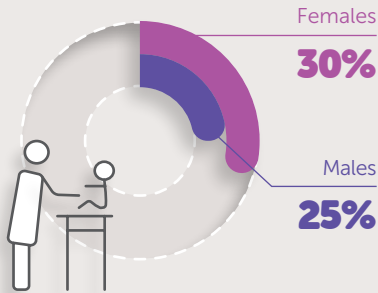


Caring and unpaid work

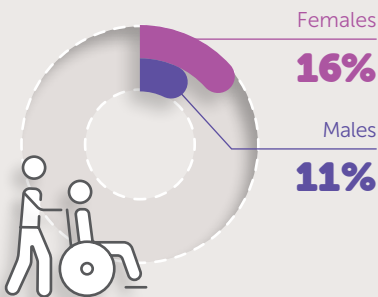
3

In Hobsons Bay, women are more likely to provide unpaid care for someone else.

Carers of children:



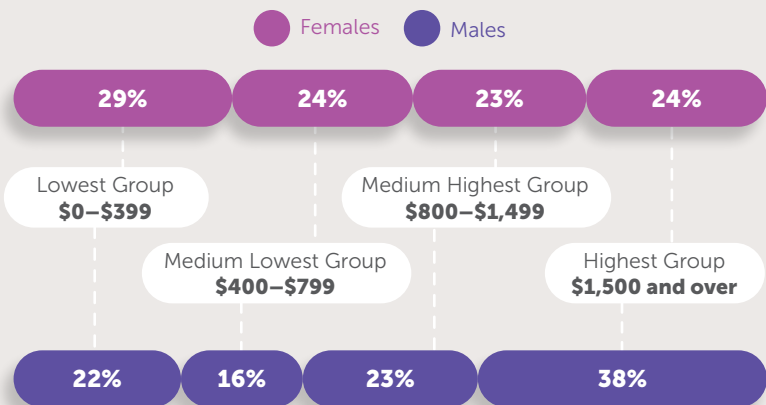
Carers of people with a disability, health condition and/or old age:



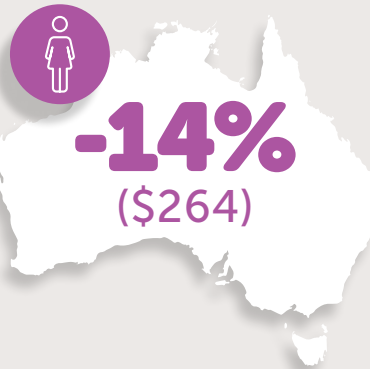
Income

1, 3, 29

In Hobsons Bay, men were more likely to be in the highest weekly individual income group and women were more likely to be in the lowest group.



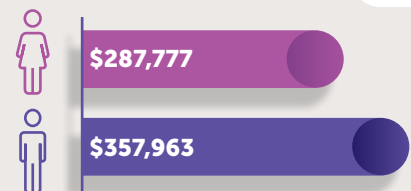
In 2022, Australian women earned 14 per cent less than men (\$264), based on full-time average weekly earnings.



On average, Australian women have around \$70,000 less than men at retirement age.

-\$70,000

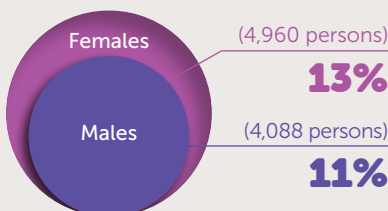
Average super balances at retirement age:



Volunteering

3

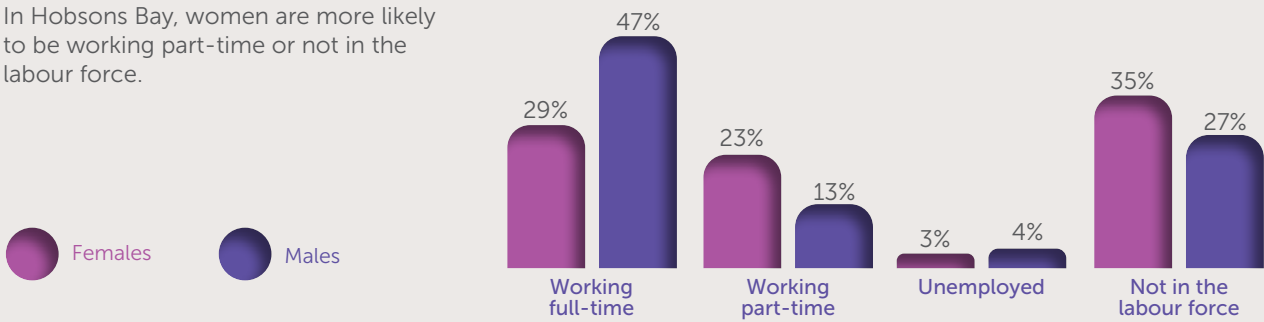
In Hobsons Bay, more females volunteer than males.



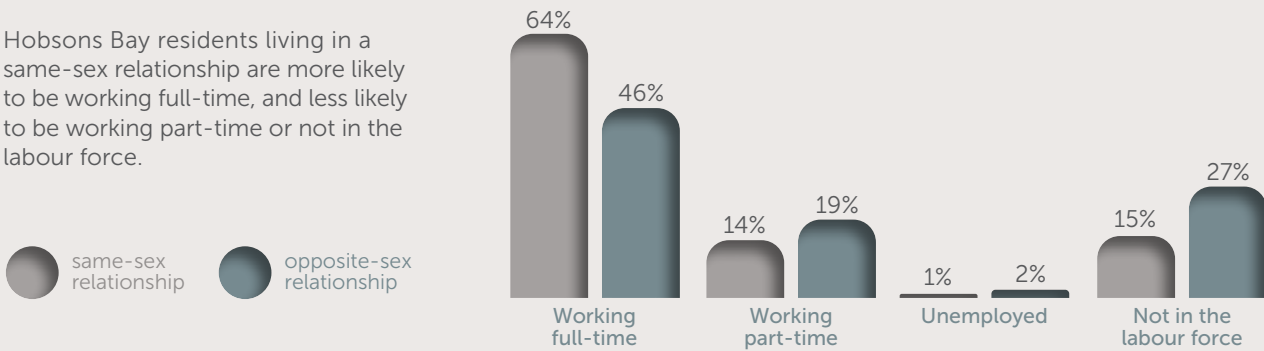
In Victoria, the average full-time pay gap is also 14 per cent, having increased by two percentage points since 2021.

Employment ³

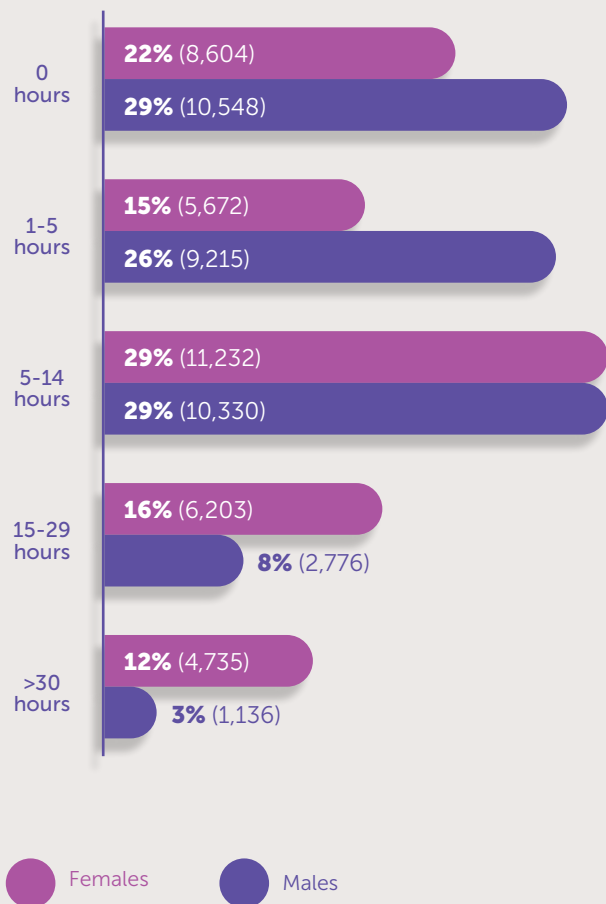
In Hobsons Bay, women are more likely to be working part-time or not in the labour force.



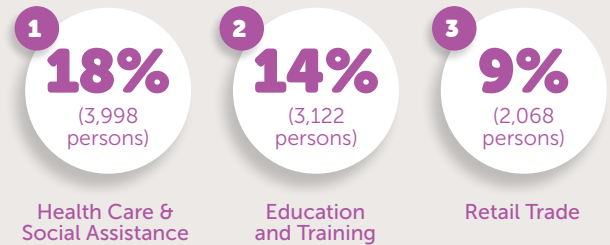
Hobsons Bay residents living in a same-sex relationship are more likely to be working full-time, and less likely to be working part-time or not in the labour force.



In Hobsons Bay, females are more likely to do unpaid domestic work:



Top three industries of employment for females in Hobsons Bay aged 15 years and over:



Top three industries of employment for males in Hobsons Bay aged 15 years and over:



Of Hobsons Bay residents, managerial roles are more likely to be held by males:



HEALTH AND WELLBEING

Long-term health conditions ³

In Hobsons Bay, a higher proportion of women have at least one long-term health condition compared to men:



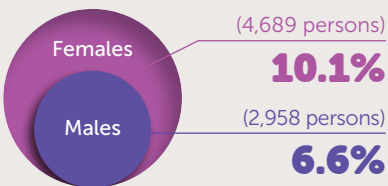
Top three health conditions amongst females in Hobsons Bay:

- 1 Mental health: **10.1%**
- 2 Arthritis: **9.7%**
- 3 Asthma: **8.8%**

Top three health conditions amongst males in Hobsons Bay:

- 1 Asthma: **7.6%**
- 2 Mental health: **6.6%**
- 3 Arthritis: **5.3%**

In Hobsons Bay, more females experience mental health (including depression or anxiety) as a long-term health condition:



Mental Health ^{16, 17, 22}

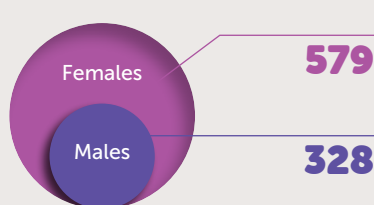
In Hobsons Bay during 2017-2018, women were more likely to report high or very high levels of psychological distress:



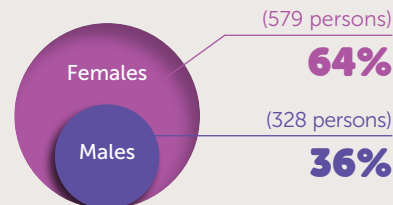
*Note: This statistic has a relative standard error between 25 and 50 per cent and should be used with caution.

Housing and Homelessness* ^{2, 7, 8, 10, 18, 21}

In 2020-2021, more females in Hobsons Bay accessed specialist homelessness services:

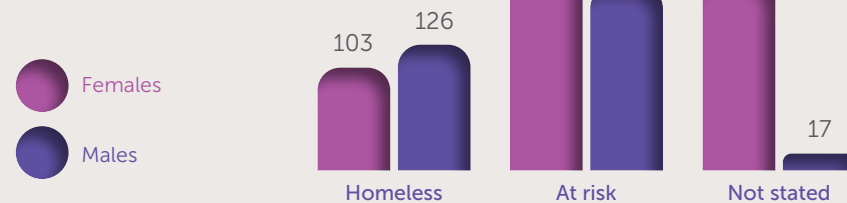


In Hobsons Bay during 2020-2021, the majority of specialist homelessness services (SHS) clients were female.



*Note: Homelessness is defined by the ABS as when a person is in an inadequate dwelling, has no or temporary tenure, or is not in control of their own space.

Being at risk of homelessness was the most common reason that men and women sought housing assistance in Hobsons Bay. There was a slightly higher number of homeless men than women, and a greater number of women who were at risk of homelessness, currently seeking support.



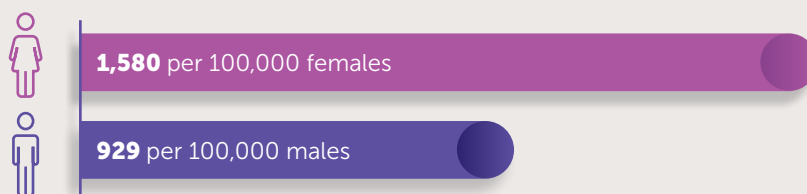
>400,000 Australian women were at risk of homelessness



A report released in August 2020 found that more than 400,000 Australian women were at risk of homelessness, including 240,000 women aged 55 years and above.

Research from 2017 also found that lesbian, gay, bisexual, trans, gender diverse and queer people are more likely to experience homelessness, when compared to the general population.

In Hobsons Bay during 2018-2019, women were more likely to be admitted to hospital for a mental health condition:

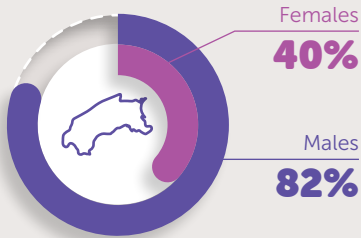


Recent research has shown that people who are LGBTQIA+ in Australia are more likely to have attempted suicide at some point during their lives.

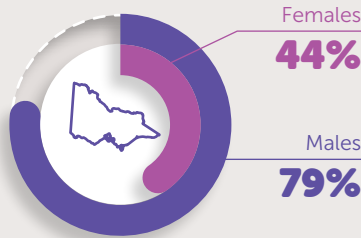
Safety

11, 12, 13, 14, 15, 20, 27, 28

In Hobsons Bay during 2015, women were significantly less likely to feel safe walking alone at night:



HOBSONS BAY



VICTORIA

In Victoria in the two years to 2017, LGBTIQ+ adults were significantly more likely to experience family violence:



Data also shows that 1 in 3 LGBTIQ+ people in Victoria have experienced intimate partner abuse, with only 1 in 5 of these cases reported.

1,027 FAMILY VIOLENCE INCIDENTS RECORDED IN HOBSONS BAY DURING 2020-2021.

Family violence rates in Hobsons Bay are below the rate for the North West Metro region:

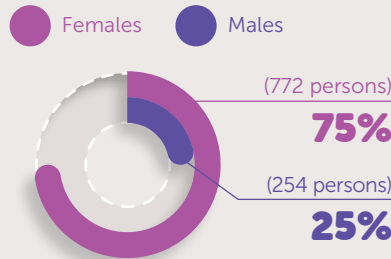


Hobsons Bay



North West Metro*

In Hobsons Bay during 2022, women made up three-quarters of all family members affected by family violence, mostly aged between 25 and 44 years:



153 SEXUAL VIOLENCE INCIDENTS RECORDED IN HOBSONS BAY DURING 2021

In 2021, Hobsons Bay ranked sixth out of 14 Councils in the North West Metro Region, with an incident rate of 157 per 100,000 population.

Intergenerational abuse is a significant issue, with women comprising most victims:

In 2015, around 75% of calls to Seniors Rights Victoria related to intergenerational abuse

7/10 elder abuse victims contacting Australian helplines were women



*Note: North West Metro is a Victoria Police region comprising Hobsons Bay and 13 other Local Government Areas.

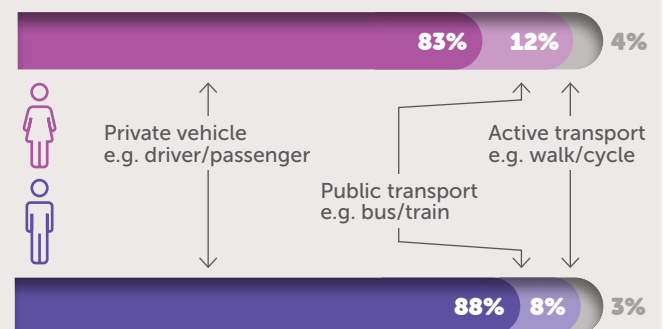
Transport

3

On Census day 2021 in Hobsons Bay, more males travelled to work and more females worked at home or did not go to work. Compared to Greater Melbourne, however, Hobsons Bay residents were overall more likely to work from home/not go to work:

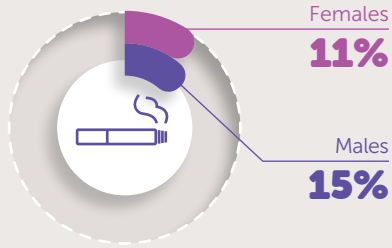


Of those who travelled to work, more males used a private vehicle and more females used public transport



Alcohol and other drugs 16, 22, 23, 24, 25, 26

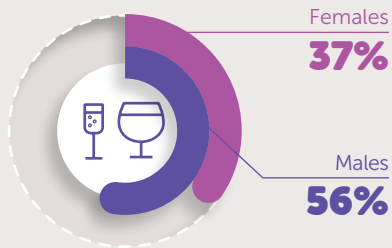
In Hobsons Bay in 2017, males were more likely to be current smokers:



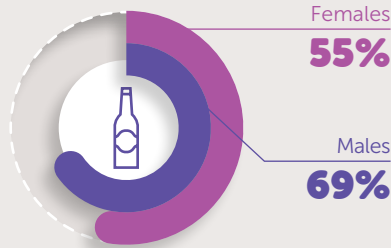
In Hobsons Bay during 2017-2018, males were more likely to drink more than two standard drinks per day:



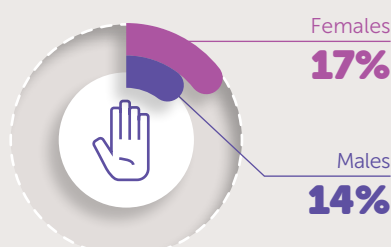
In Hobsons Bay in 2017, a higher proportion of males were at increased risk of injury from a single occasion of drinking:



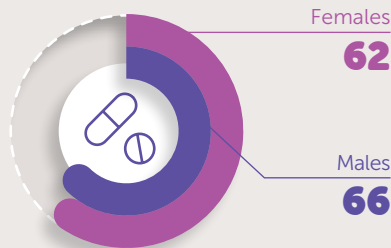
In Hobsons Bay in 2017, a higher proportion of males were at increased lifetime risk of alcohol-related harm:



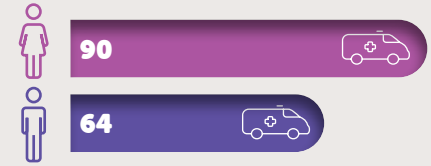
In Hobsons Bay in 2017, a higher proportion of females abstained from or no longer drank alcohol:



In Hobsons Bay in 2019, more males were admitted to hospital due to an overdose of prescription drugs:



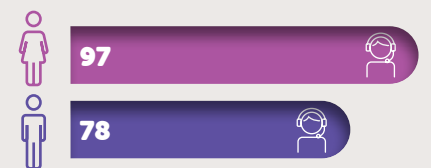
In Hobsons Bay in 2020-2021, more females received ambulance attention as a result of overdosing on prescription drugs:



In Hobsons Bay in 2019, more males were admitted to hospital for alcohol-related causes:



In Hobsons Bay in 2020, more females accessed alcohol and drug telephone counselling and referral services:

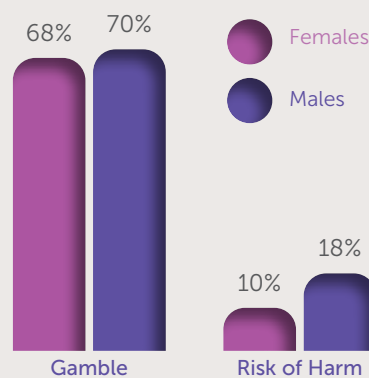


In Hobsons Bay in 2020, more females accessed alcohol and drug online treatment sessions:



Gambling 9, 19

Victorian data from 2018-2019 shows that similar proportions of females and males gamble, but males who gamble are at higher risk of experiencing harm:



In 2020, the Victorian Responsible Gambling Foundation found that in general:

LGBTIQA+ VICTORIANS

were less likely to be at risk of gambling harm.



Note: Participation in gambling includes activities such as lotteries, poker machines and sports betting.

Reference list

- Association of Superannuation Funds of Australia (2022) *Super statistics - ASFA, Association of Superannuation Funds of Australia*. Available at: <https://www.superannuation.asn.au/resources/superannuation-statistics> (Accessed: 1 November 2022).
- Australian Bureau of Statistics (2014) '4922.0 - Information Paper - A Statistical Definition of Homelessness, 2012', *4922.0 / 2012 / Information Paper - A Statistical Definition of Homelessness / Homelessness Statistics - Q&A and Factsheets*. Available at: <https://www.abs.gov.au/ausstats/abs@.nsf/Latestproducts/4922.0Main%20Features22012> (Accessed: 1 November 2022).
- Australian Bureau of Statistics (2022) *2021 Census of Population and Housing, Australian Bureau of Statistics - TableBuilder - Datasets*. Available at: <https://tablebuilder.abs.gov.au/webapi/jsf/dataCatalogueExplorer.xhtml> [Census TableBuilder Pro] (Accessed: 1 November 2022).
- Australian Bureau of Statistics (2022b) *Region summary: Hobsons Bay, Australian Bureau of Statistics*. Available at: <https://dbr.abs.gov.au/region.html?yr=lg&rgn=23110> (Accessed: 1 November 2022).
- Australian Bureau of Statistics (c. 2020) *Disability, Ageing and Carers, Australia: Summary of Findings, Australian Bureau of Statistics*. Available at: <https://www.abs.gov.au/statistics/health/disability/disability-ageing-and-carers-australia-summary-findings/2018> (Accessed: 1 November 2022).
- Australian Institute of Family Studies (2022) *LGBTIQA+ glossary of common terms*. Available at: <https://aifs.gov.au/resources/resource-sheets/lgbtiqa-glossary-common-terms>.
- Australian Institute of Health and Welfare (2022a) *Homelessness and homelessness services, Australian Institute of Health and Welfare*. Available at: <https://www.aihw.gov.au/reports/australias-welfare/homelessness-and-homelessness-services> (Accessed: 1 November 2022).
- Australian Institute of Health and Welfare (2022b) 'SHSC client location - LGA', *Specialist Homelessness Services Collection data cubes 2011-12 to 2020-21*. Available at: <https://reporting.aihw.gov.au/Reports/openRVUrl.do?rsRID=SBIP%3A%2F%2FMETASERVER%2FAIHW%2FReleasedPublic%2FSpecialist+Homeless+Services+2021%2FReports%2FSHS+geography+LGA+2021.srx> (Accessed: 1 November 2022).
- Bush, R. et al. (2020) *Examining risk and protective factors for the development of gambling-related harms and problems in Victorian LGBTIQ+ communities*. Available at: <https://responsiblegambling.vic.gov.au/resources/publications/examining-risk-and-protective-factors-for-the-development-of-gambling-related-harms-and-problems-in-victorian-lgbtqi-communities-994/>.
- Council to Homeless Persons (c. 2019) *Local data, Council to Homeless Persons*. Available at: <https://chp.org.au/sector-learning-and-development/local-data/> (Accessed: 1 November 2022).
- Crime Statistics Agency (2022a) *Family Incidents by Aboriginal and Torres Strait Islander status, Crime Statistics Agency*. Available at: <https://www.crimestatistics.vic.gov.au/crime-statistics/latest-aboriginal-crime-data/family-incidents-by-aboriginal-and-torres-strait> (Accessed: 1 November 2022).
- Crime Statistics Agency (2022b) *Latest crime data by area, Crime Statistics Agency*. Available at: <https://www.crimestatistics.vic.gov.au/crime-statistics/latest-crime-data-by-area> (Accessed: 1 November 2022).
- Crime Statistics Agency (c. 2021a) *Sexual violence, Crime Statistics Agency*. Available at: <https://www.crimestatistics.vic.gov.au/family-violence-data-portal/family-violence-data-dashboard/sexual-violence> (Accessed: 1 November 2022).
- Crime Statistics Agency (c. 2021b) *Victoria Police, Crime Statistics Agency*. Available at: <https://www.crimestatistics.vic.gov.au/family-violence-data-portal/family-violence-data-dashboard/victoria-police> (Accessed: 1 November 2022).
- Department of Health (2022a) *Family violence and LGBTIQA+ victim-survivors, Better Health Channel*. Available at: <https://www.betterhealth.vic.gov.au/health/healthyliving/family-violence-and-LGBTIQA-victim-survivors> (Accessed: 1 November 2022).
- Department of Health (2022b) 'Victorian Population Health Survey 2017', *Victorian Population Health Survey 2017*. Available at: <https://www.health.vic.gov.au/population-health-systems/victorian-population-health-survey-2017> (Accessed: 1 November 2022).
- LGBTIQ+ Australia (2021) *Snapshot of Mental Health and Suicide Prevention Statistics for LGBTIQ+ People*. Available at: <https://www.lgbtiqhealth.org.au/statistics>.
- Mercy Foundation (c. 2020) *Older women and homelessness, Mercy Foundation*. Available at: <https://www.mercyfoundation.com.au/our-focus/ending-homelessness/older-women-and-homelessness/> (Accessed: 1 November 2022).
- Rockloff, M. et al. (2020) *Victorian population gambling and health study 2018-2019*. Available at: <https://responsiblegambling.vic.gov.au/resources/publications/victorian-population-gambling-and-health-study-20182019-759/>.
- Seniors Rights Victoria (2018) *Elder Abuse, Gender and Sexuality Discussion Paper*. Available at: <https://seniorsrights.org.au/resources-education/policy-and-research/discussion-papers/>.
- State Government of Victoria (2021) *Snapshot: LGBTIQ+ homelessness in Victoria, State Government of Victoria*. Available at: <https://www.vic.gov.au/snapshot-lgbtqi-homelessness-victoria> (Accessed: 1 November 2022).
- Torrens University Australia (2022) *Social Health Atlases - Data - Social Health Atlases of Australia: Local Government Areas, Torrens University Australia*. Available at: <https://phidu.torrens.edu.au/social-health-atlases/data> (Accessed: 1 November 2022).
- Turning Point (2022a) *Ambulance attendances for alcohol and drug-related events, AODstats by Turning Point*. Turning Point. Available at: <https://aodstats.org.au/explore-data/ambulance-attendances/> (Accessed: 1 November 2022).
- Turning Point (2022b) *Counselling online, AODstats by Turning Point*. Turning Point. Available at: <https://aodstats.org.au/explore-data/counselling-online/> (Accessed: 1 November 2022).
- Turning Point (2022c) *DirectLine, AODstats by Turning Point*. Turning Point. Available at: <https://aodstats.org.au/explore-data/directline/> (Accessed: 1 November 2022).
- Turning Point (2022d) *Hospital admissions, AODstats by Turning Point*. Turning Point. Available at: <https://aodstats.org.au/explore-data/hospital-admissions/> (Accessed: 1 November 2022).
- Victorian Agency for Health Information (2021) *The health and wellbeing of the lesbian, gay, bisexual, transgender, intersex and queer population in Victoria - Findings from the Victorian Population Health Survey 2017*. Available at: <https://vahi.vic.gov.au/report/population-health/health-and-wellbeing-lgbtqi-population-victoria>.
- Women's Health Victoria (2022) *Violence Against Women - Perceptions of Safety - % People who feel safe when walking alone at night - 2015, Victorian Women's Health Atlas*. Available at: https://victorianwomenshealthatlas.net.au/#/atlas/Violence%20Against%20Women/V/Perceptions%20of%20Safety/V_01/2015%20%25%20People%20who%20feel%20safe%20when%20walking%20alone%20at%20night/143/F/state/all/false.
- Workplace Gender Equality Agency (2022) *Gender pay gap data, Workplace Gender Equality Agency*. Available at: <https://www.wgea.gov.au/pay-and-gender/gender-pay-gap-data> (Accessed: 1 November 2022).