

CHILDREN

RESEARCH SUMMARY



Our health and wellbeing is shaped by the people in our lives, our community, and the place in which we live.

Hobsons Bay City Council has prepared a series of research summaries to provide information about the social and environmental conditions that affect our health and wellbeing.

This research summary provides information on children in Hobsons Bay, who are defined as people aged 0 to 11 years.

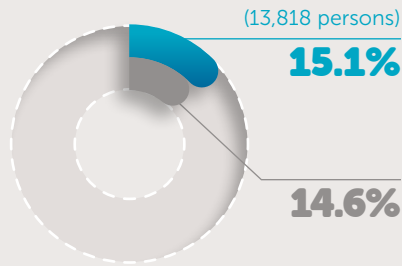
PEOPLE

Population

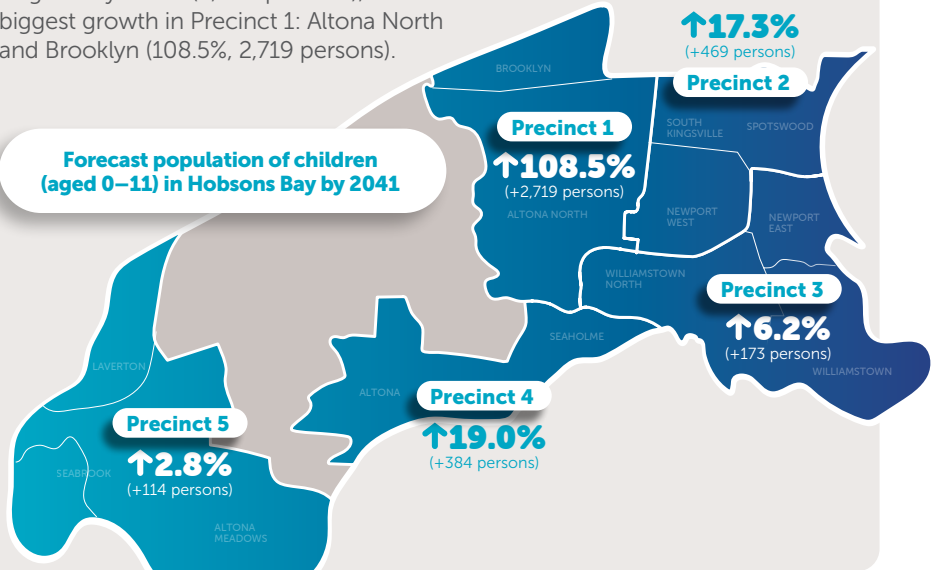
7, 8

In 2021, children made up 15.1% (13,818 persons) of Hobsons Bay's population, a similar proportion to Greater Melbourne (14.6%).

- Hobsons Bay
- Greater Melbourne



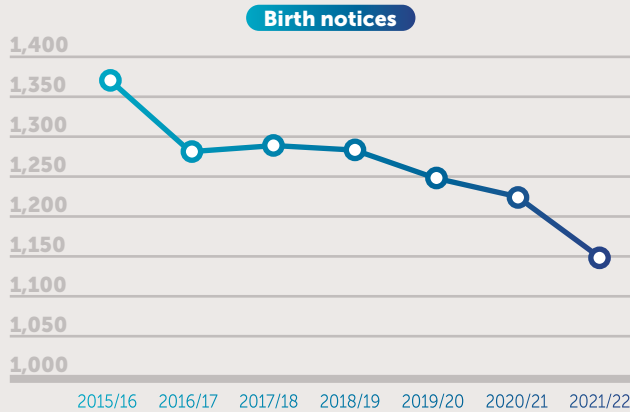
By 2041, the number of children is forecast to grow by 27.4% (3,859 persons), with the biggest growth in Precinct 1: Altona North and Brooklyn (108.5%, 2,719 persons).



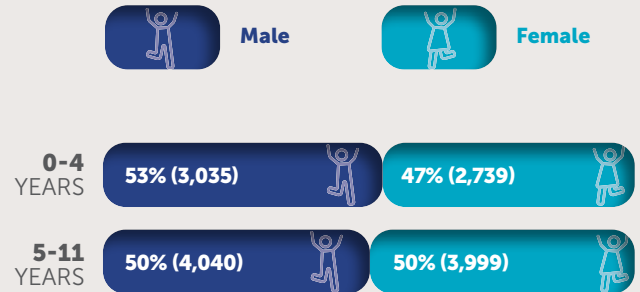
Age

2, 6

In 2021-22, 1,150 birth notices were recorded in Hobsons Bay, a 16.3% decrease from 2015-16.



In 2021, Hobsons Bay had more males aged 0-4 and similar numbers of males and females aged 5-11.



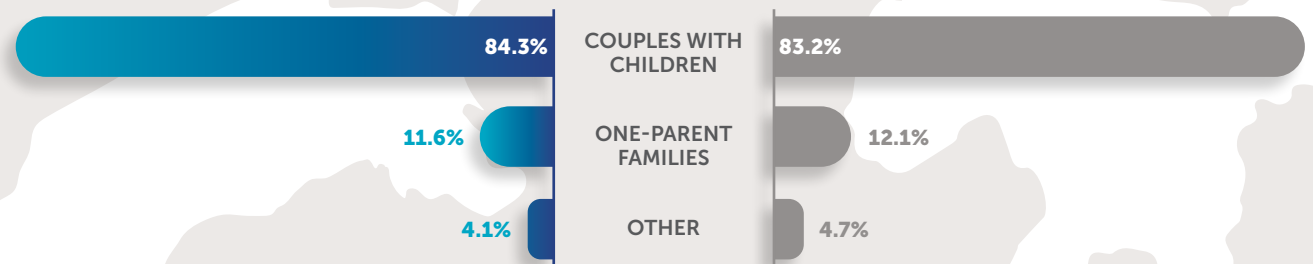
Note: This is consistent with rates in Greater Melbourne.

Households

2

In 2021, there were similar proportions of children living in all household types across Hobsons Bay compared to Greater Melbourne.

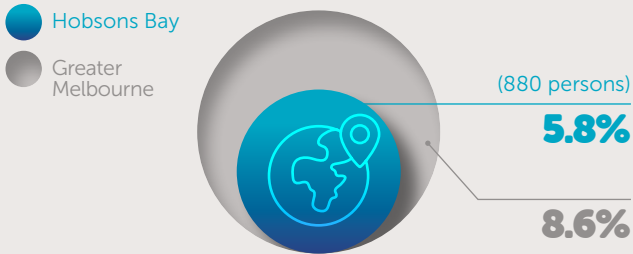
- Hobsons Bay
- Greater Melbourne



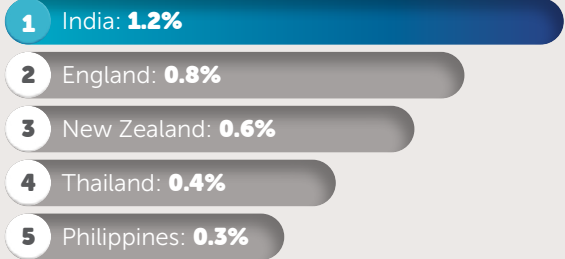
Cultural diversity

2

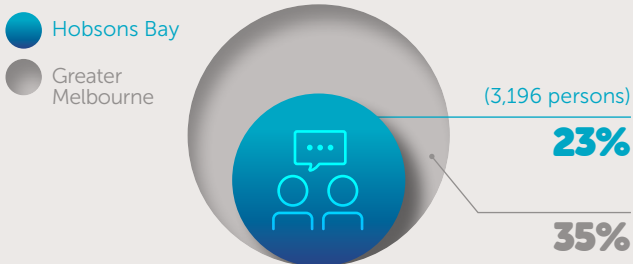
In 2021, Hobsons Bay had a smaller proportion of children who were born overseas (5.8%), compared to Greater Melbourne (8.6%).



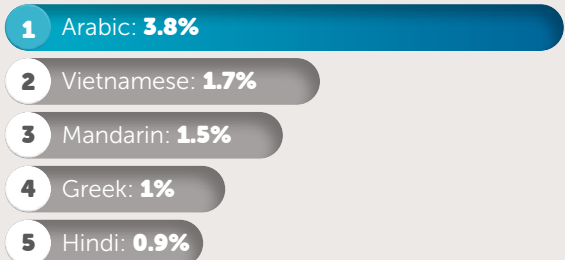
The top five overseas birthplaces for children in Hobsons Bay:



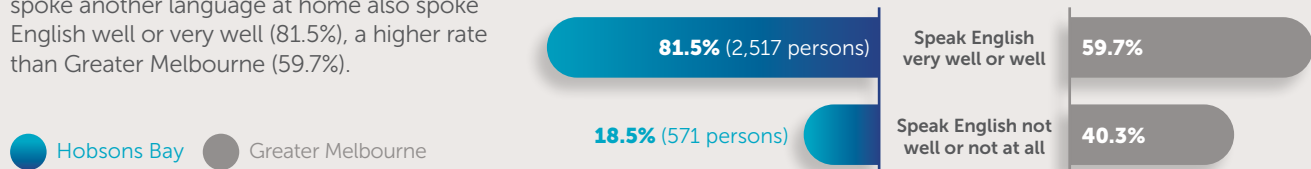
In 2021, Hobsons Bay had a smaller proportion of children who spoke a language other than English at home (22.9%), compared to Greater Melbourne (34.7%).



The top five languages spoken by children in Hobsons Bay:



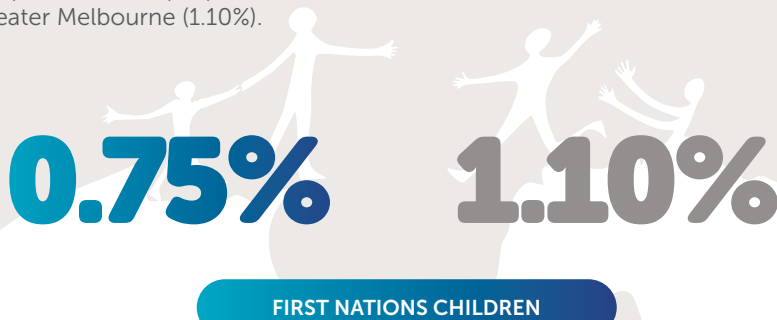
In 2021, most children in Hobsons Bay who spoke another language at home also spoke English well or very well (81.5%), a higher rate than Greater Melbourne (59.7%).



First Nations

2

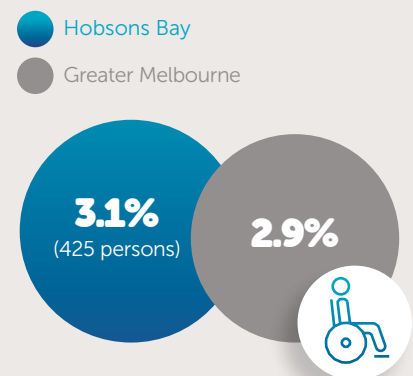
In 2021, 0.75% of children in Hobsons Bay (104 persons) were First Nations people, a smaller proportion than Greater Melbourne (1.10%).



Disability

2

In 2021, 3.1% of children in Hobsons Bay (425 persons) required assistance with their daily activities, a similar proportion to Greater Melbourne (2.9%).



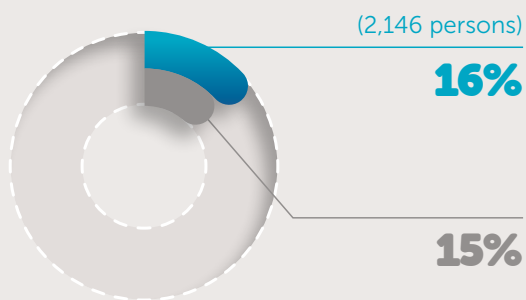
EDUCATION & EMPLOYMENT

Education

2

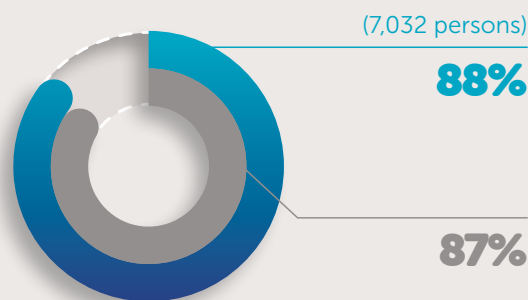
In 2021, 16% of children in Hobsons Bay (2,146 persons) were attending three or four-year-old kindergarten, a similar proportion to Greater Melbourne (15%).

Hobsons Bay **Greater Melbourne**

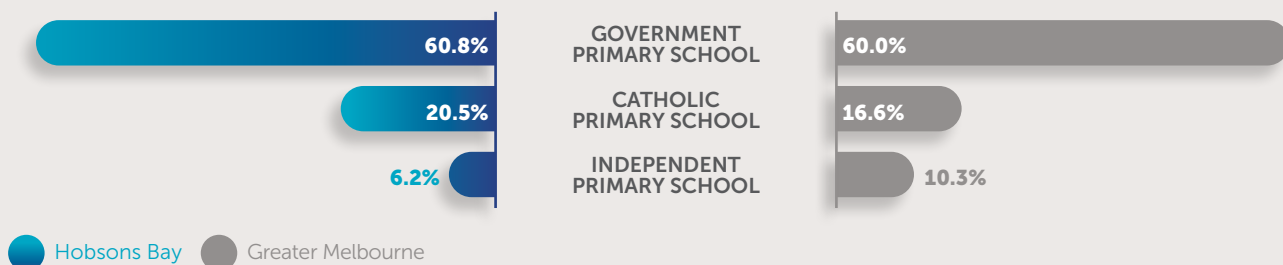


In 2021, 87.5% of children aged 5-11 in Hobsons Bay (7,032 persons) were attending primary school, a similar proportion to Greater Melbourne (87%).

Hobsons Bay **Greater Melbourne**



In 2021, a higher proportion of children in Hobsons Bay were attending a Catholic primary school (20.5%), compared to Greater Melbourne (16.6%).

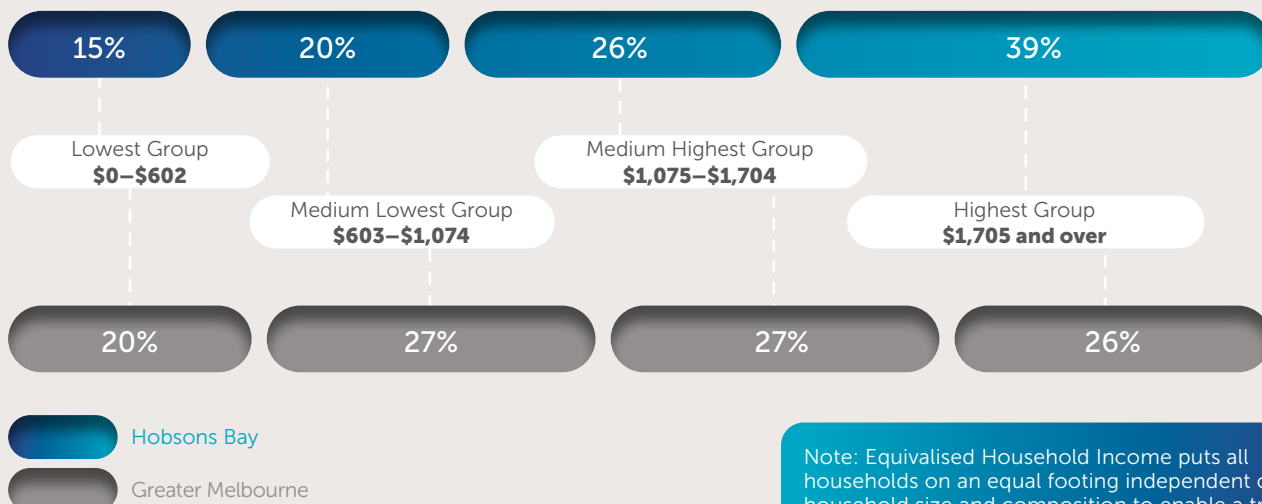


Income

2

In 2021, a substantially larger proportion of households with children in Hobsons Bay (39%) were in the highest group for equivalised weekly household income, compared to Greater Melbourne (26%).

INCOME LEVELS OF HOBSONS BAY



Note: Equivalised Household Income puts all households on an equal footing independent of household size and composition to enable a true comparison between households (.id Consulting 2022).

HEALTH AND WELLBEING

Long-term health conditions ²

Top three health conditions among children in Hobsons Bay:

- 1** Asthma: **5.2%** (720 persons)
- 2** Mental health: **1.0%** (145 persons)
- 3** Heart disease: **0.2%** (28 persons)

Note: These are the same as Greater Melbourne.

Mental Health ¹⁰



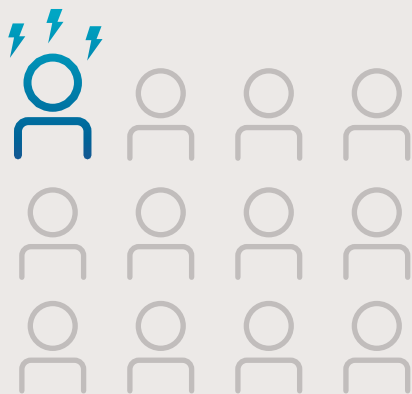
Up to 5x

more likely to show emotional and behavioural difficulties

Research found that children who experienced Victoria's second lockdown (July to October 2020) were two to five times more likely to show emotional and behavioural difficulties, compared to children in other states.

Children's development ^{1.4.5}

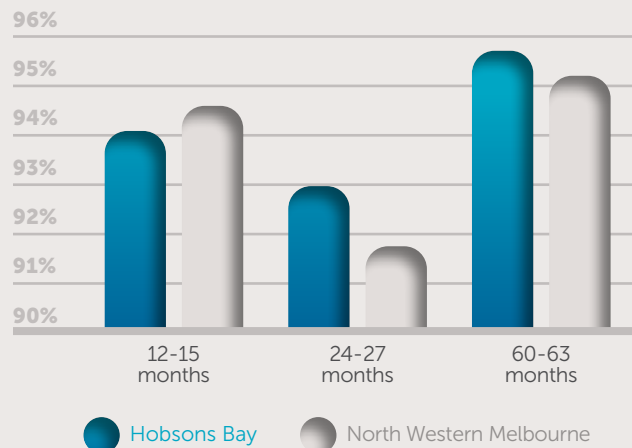
In 2021, about 1 in 12 children in Hobsons Bay were developmentally vulnerable on two or more domains of the Australian Early Development Census, e.g. physical health and wellbeing, emotional maturity, language and cognitive skills.



Note: This is lower than the Victorian rate (1 in 10)

In 2021, childhood immunisation rates in Hobsons Bay were similar to North Western Melbourne.

CHILDHOOD IMMUNISATION RATE



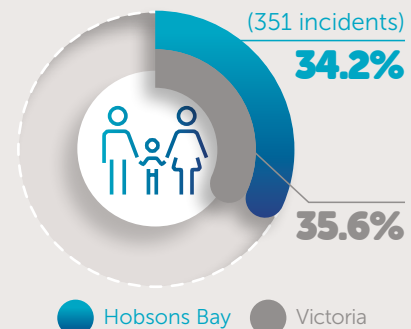
Gambling ⁹

In 2017, research conducted with New South Wales and Victorian children found that three in four kids see gambling as a normal part of sport.



Safety ³

In 2021-22, at least one child was affected in 34.2% of family incidents in Hobsons Bay (351 incidents), slightly lower than the Victorian rate of 35.6%.



Reference list

1. AEDC (c. 2021) 'AEDC - Data Explorer', *AEDC Australian Early Development Census*. Available at: <https://www.aedc.gov.au/data-explorer/> (Accessed: 1 December 2022).
2. Australian Bureau of Statistics (2022) *2021 Census of Population and Housing, Australian Bureau of Statistics - TableBuilder - Datasets*. Available at: <https://tablebuilder.abs.gov.au/webapi/jsf/dataCatalogueExplorer.xhtml> (Accessed: 1 December 2022).
3. Crime Statistics Agency (2022) 'Victoria Police Family Violence Incidents Infographic', *Crime Statistics Agency*. Available at: <https://www.crimestatistics.vic.gov.au/family-violence-data-portal/family-violence-infographics/victoria-police-family-violence-incidents> (Accessed: 1 December 2022).
4. Department of Health and Aged Care (2022) '2021 PHN Childhood immunisation coverage data', *Publications*. Available at: <https://www.health.gov.au/resources/publications/2021-phn-childhood-immunisation-coverage-data?language=en> (Accessed: 1 December 2022).
5. Hobsons Bay City Council (c. 2022) *Annual Report 2021-22*. Available at: <https://www.hobsonsbay.vic.gov.au/Council/Publications/Annual-Report> (Accessed: 1 December 2022).
6. Hobsons Bay City Council - Maternal and Child Health team (c. 2022) 'Birth Notice Stats 2016 onwards', *Maternal and Child Health Records*.
7. .id informed decisions (2022a) *Hobsons Bay City - Community Profile*, .id community demographic resources. Available at: <https://profile.id.com.au/hobsons-bay/service-age-groups> (Accessed: 1 December 2022).
8. .id informed decisions (2022b) *Hobsons Bay City - Population Forecast*, .id community demographic resources. Available at: <https://forecast.id.com.au/hobsons-bay> (Accessed: 1 December 2022).
9. Pitt, H. et al. (2016) "It's just everywhere!" Children and parents discuss the marketing of sports wagering in Australia', *Australian and New Zealand journal of public health*, 40(5), pp. 480–486. doi: 10.1111/1753-6405.12564.
10. Vasileva, M. and Alisic, E. (c. 2021) 'Victorian kids' mental health hit hardest during 2020'. Available at: <https://pursuit.unimelb.edu.au/articles/victorian-kids-mental-health-hit-hardest-during-2020> (Accessed: 1 December 2022).