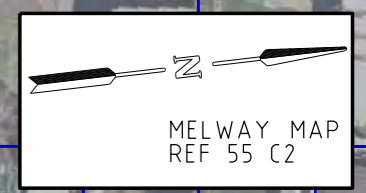
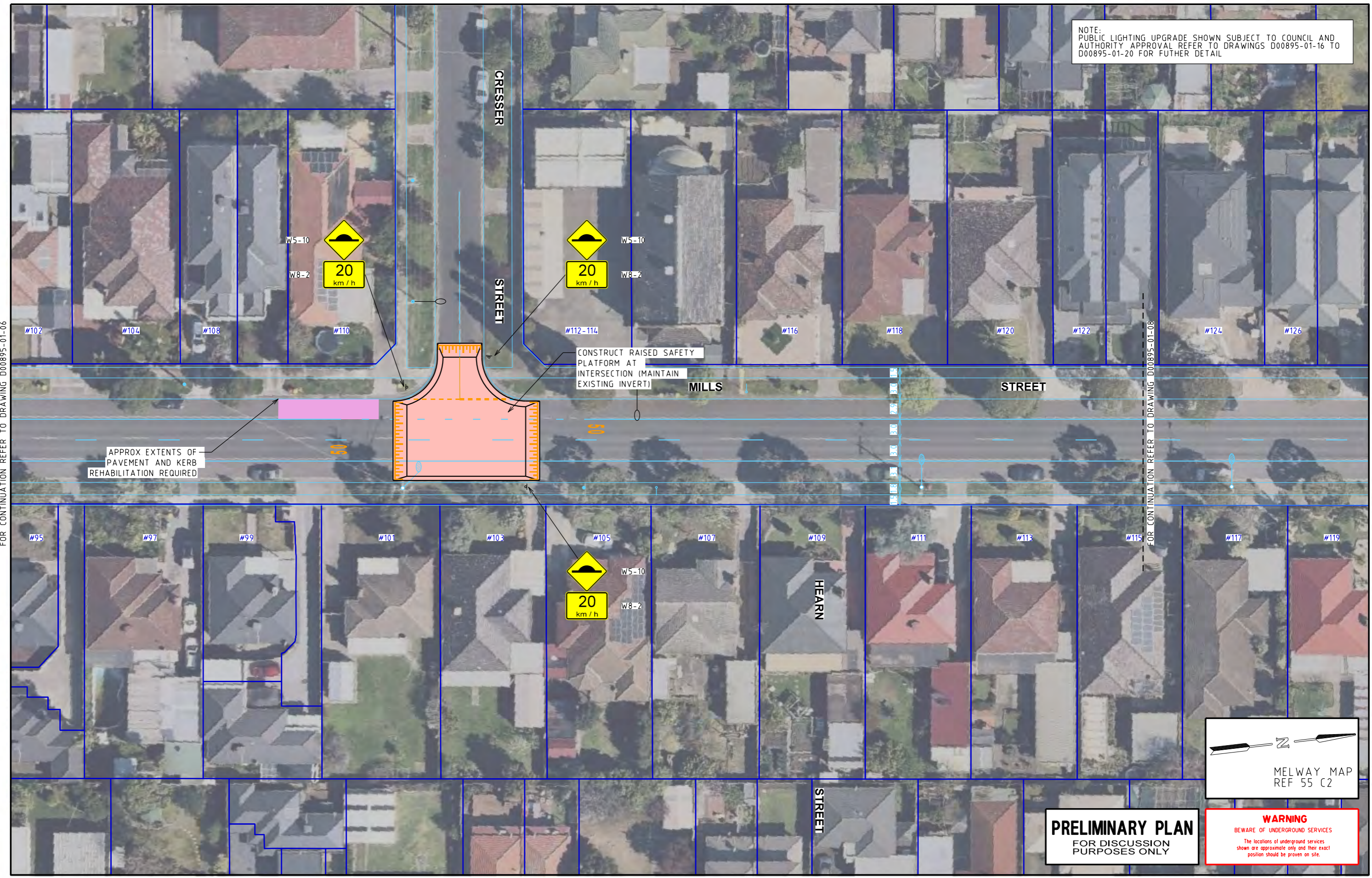


NOTE:
PUBLIC LIGHTING UPGRADE SHOWN SUBJECT TO COUNCIL AND
AUTHORITY APPROVAL REFER TO DRAWINGS D00895-01-16 TO
D00895-01-20 FOR FURTHER DETAIL



PRELIMINARY PLAN
FOR DISCUSSION
PURPOSES ONLY

WARNING
BEWARE OF UNDERGROUND SERVICES
The locations of underground services shown are approximate only and their exact position should be proven on site.

DATE: 21/03/2023
MODEL: D00895-01-07
FILE: \ms\svz\group\Synergy\Projects\IDGN\IDGN00895-01-Drawings\D00895-01-00.dgn

ISSUE	ISSUE DESCRIPTION	DESIGNER	CHECKED/APPROVED	ISSUE DATE	GENERAL NOTES
A	INITIAL ISSUE	SOK	NW (RPE 6892)	16 FEB 2023	1 BASE INFORMATION FROM AERIAL PHOTOGRAPH (SOURCE: NEARMAP OCT 2022) 2 ALL DIMENSIONS ARE TO FACE OF KERB & CHANNEL 3 LOCAL ROAD - MILLS STREET (SPEED ZONE 50km/h) 4 ALL PROPOSED FOOTPATHS AND PRAM CROSSINGS ARE TO BE CONSTRUCTED WITH TACTILE GROUND SURFACE INDICATORS TO DDA COMPLIANCE GUIDELINES REFER TO AS 1428 4-2009
B	COUNCIL COMMENTS INCORPORATED	SOK	NW (RPE 6892)	21 MAR 2023	

DESIGNED
S. O'KEEFE

CHECKED/APPROVED
N. WOOLCOCK

FILE NAME
D00895-01-00.dgn

Traffix Group

Level 28, 459 Collins Street
Melbourne, Victoria 3000
+61 3 9822 2888
www.traffixgroup.com.au

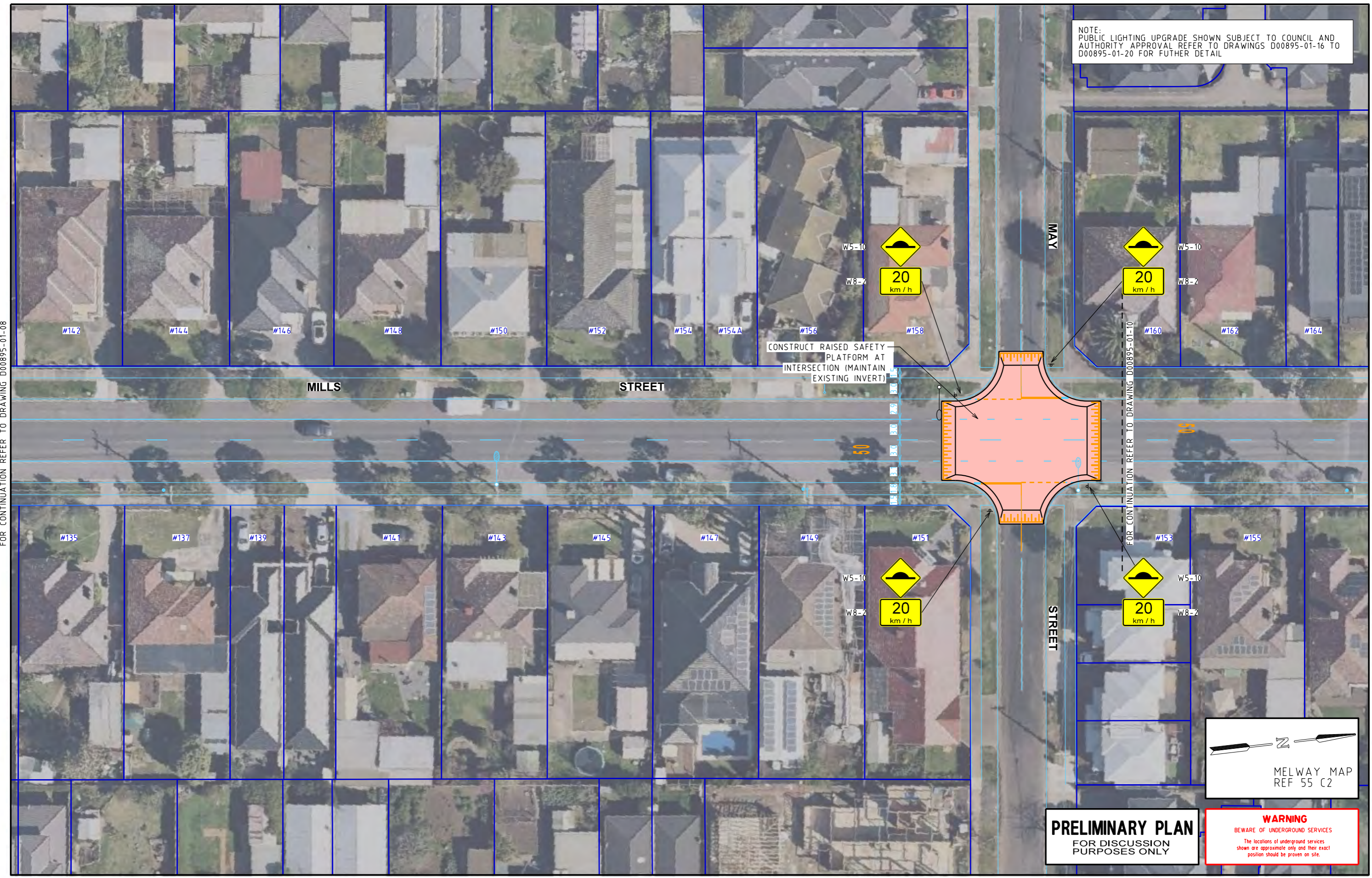
**MILLS STREET
ALTONA**
HOBSONS BAY CITY COUNCIL
CONCEPT PLAN - OPTION 2

SCALE 1:500 (A3) 0 2.5 5 7.5 10

SHEET No. 2/5

DWG No. D00895-01-07

NOTE:
PUBLIC LIGHTING UPGRADE SHOWN SUBJECT TO COUNCIL AND
AUTHORITY APPROVAL REFER TO DRAWINGS D00895-01-16 TO
D00895-01-20 FOR FUTHER DETAIL



FOR CONTINUATION REFER TO DRAWING D00895-01-08

FOR CONTINUATION REFER TO DRAWING D00895-01-10

MELWAY MAP
REF 55 C2

PRELIMINARY PLAN
FOR DISCUSSION
PURPOSES ONLY

WARNING
BEWARE OF UNDERGROUND SERVICES
The locations of underground services
shown are approximate only and their exact
position should be proven on site.

DATE: 21/03/2023
MODEL: D00895-01-09
FILE: \In\sv\z\group\Synergy\Projects\IDGN\IDGN00895-01-00-Drawings\D00895-01-00.dgn

ISSUE	ISSUE DESCRIPTION	DESIGNER	CHECKED/APPROVED	ISSUE DATE	GENERAL NOTES
A	INITIAL ISSUE	SOK	NW (RPE 6892)	16 FEB 2023	1. BASE INFORMATION FROM AERIAL PHOTOGRAPH (SOURCE: NEARMAP OCT 2022) 2. ALL DIMENSIONS ARE TO FACE OF KERB & CHANNEL 3. LOCAL ROAD - MILLS STREET (SPEED ZONE 50km/h) 4. ALL PROPOSED FOOTPATHS AND PRAM CROSSINGS ARE TO BE CONSTRUCTED WITH TACTILE GROUND SURFACE INDICATORS TO DDA COMPLIANCE GUIDELINES REFER TO AS 1428.4.2009
B	COUNCIL COMMENTS INCORPORATED	SOK	NW (RPE 6892)	21 MAR 2023	

DESIGNED
S. O'KEEFE

CHECKED/APPROVED
N. WOOLCOCK

FILE NAME
D00895-01-00.dgn

Traffix Group

Level 28, 459 Collins Street
Melbourne, Victoria 3000
+61 3 9822 2888
www.traffixgroup.com.au

**MILLS STREET
ALTONA
HOBSONS BAY CITY COUNCIL
CONCEPT PLAN - OPTION 2**

SCALE 1:500 (A3) 0 2.5 5 7.5 10

SHEET No. 4/5 DWG No. D00895-01-09