

Williamstown Junction

Double Storey Garages

While a second storey above a garage is permitted within the Williamstown Junction building envelope, such development must ensure a high standard of design is achieved. Issues such as visual bulk, overlooking and overshadowing should be addressed through appropriate design.

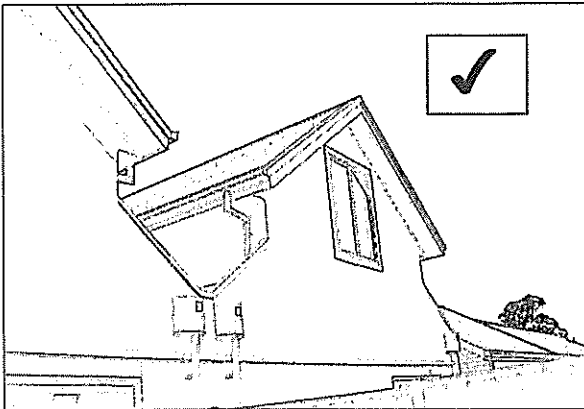


Figure 1: Use of side setbacks creates visual articulation and reduces visual bulk.

Figure 2: The use of a dormer window provides visual articulation to second storey development above the garage.

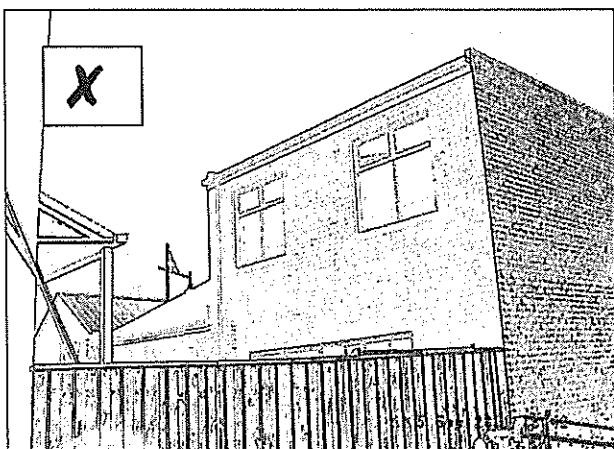
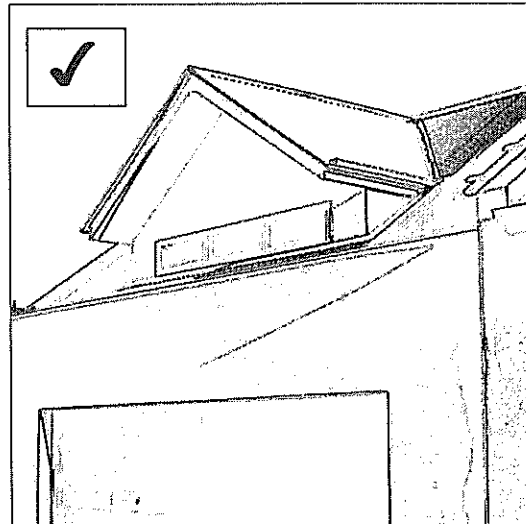


Figure 3: Sheer double storey walls result in excessive visual bulk