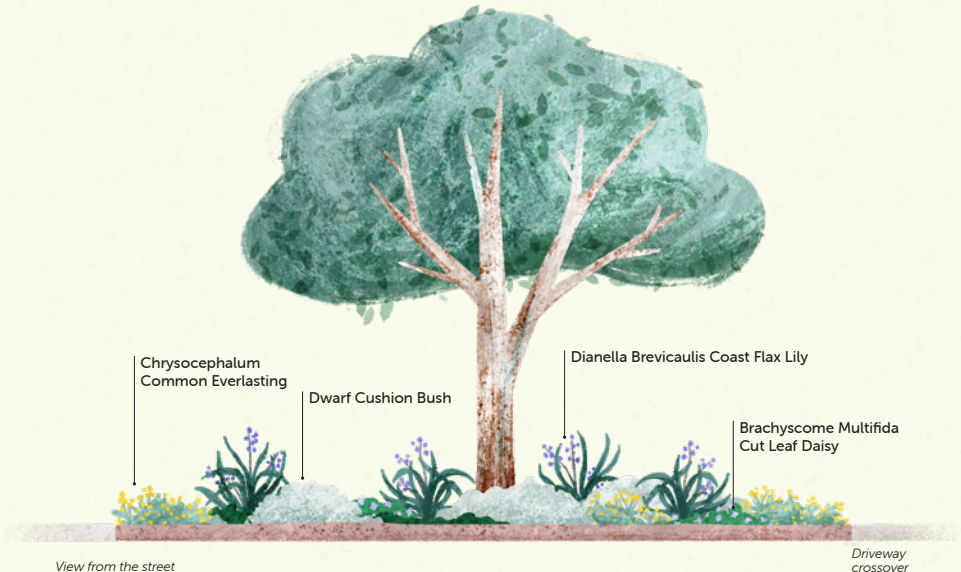
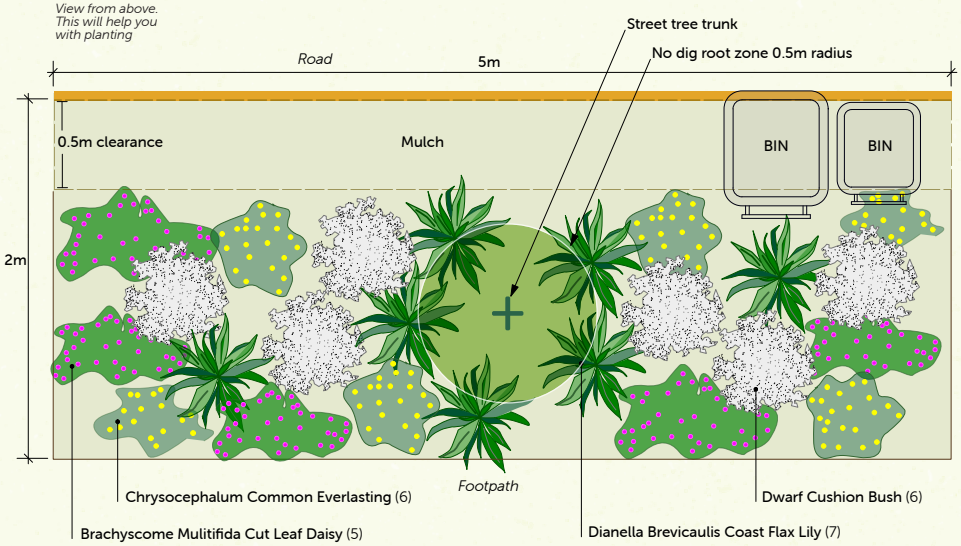


WILDFLOWER MEADOW FACT SHEET

Create a beautiful flowering
wildflower native nature strip

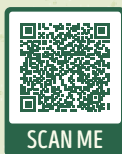
The hero plant of this design is the Dwarf Cushion Bush, a free-flowing shape defined by clusters of twos and threes. Its silver-grey foliage provides structure amongst the wildflowers.

This planting style seeks to recreate nature where plants of the same species are clumped together and rarely found in isolation.



RECOMMENDED PLANTS

Based on average nature strip being five metres long by two metres wide, it is recommended to plant the following:



Nature strip maintenance requirements:
As per Hobsons Bay City Council guidelines, residents are required to maintain the nature strip adjacent to their property. This involves keeping it free of trip hazards, protruding objects and ensuring pathways, gutters and driveways are free of weeds, rubbish, and mulch. **Scan to view the Nature Strip Landscape Guidelines**

CUT LEAF DAISY

5

Brachyscome multifida

Height: 20cm

Width: 50cm

Sun: Full sun, semi shade

Soil type: Prefers moist clay soil, drought tolerant once established

Flowers and seed: Deep mauve daisy like flowers for most of the year, peaking Sep – March

Ecological role: Nectar plant for butterflies, useful soil binder
Maintenance: Clip old flowers to encourage a new flush of flowers mid-summer

COMMON EVERLASTING

6

Chrysocephalum apiculatum

Height: 20cm

Width: 50cm

Sun: Full sun, semi shade

Soil type: Most soil types, prefers well drained soil

Flowers: Bright gold flowers all-year

Ecological role: Nectar plant for butterflies

Maintenance: Prune late winter or early spring if required

COAST FLAX LILY

7

Dianella brevicaulis

Height: 50cm

Width: 50cm

Sun: Full sun, semi shade

Soil type: Any, prefers well drained

Flowers and seed: Dark blue flowers Oct – Dec. Cobalt blue berries through summer

Ecological role: Bird attracting berries

Maintenance: Dianella do not need pruning for the first several years but will then benefit from a periodic prune. Prune to remove old flower spikes from the base of the plant once berries are finished in late autumn. Remove dead or yellowing leaves to keep plant looking tidy

DWARF CUSHION BUSH

6

Leucophyta nana

Height: 50cm

Width: 50cm

Sun: Full sun, semi shade

Soil type: Clay soil, rich composted soil, sandy soil, avoid wet sites

Flowers and seed: Small evergreen shrub with silver grey foliage and small yellow flowers Sep – Feb

Maintenance: Prune lightly if required


Please note: The native Dwarf Cushion Bush cultivar is compliant with the naturestrip height guidelines. The indigenous Cushion Bush *Leucophyta brownie* (1m High x 1m Wide) will require additional pruning

HOBSONS
BAY CITY
COUNCIL



Contact email

habitatgardens@hobsonsbay.vic.gov.au

 Recommended number
of plants to buy

